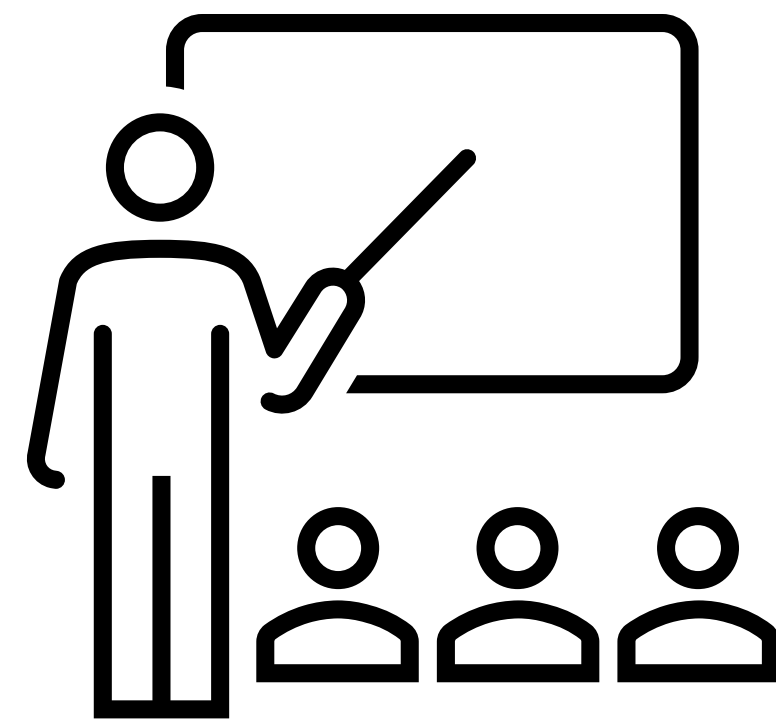


The Economic Geography Unit of the University of Bern examines the evolution of urban and regional economies. We are interested in the ways in which places develop, maintain their economic competitiveness and sustainability.

Teaching

Bachelor

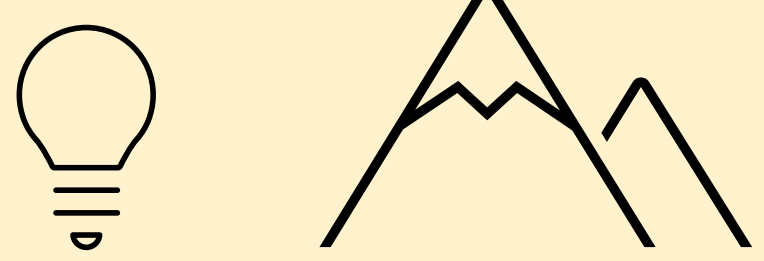
- Humangeographie I + II (Wigeo Teil)
- Wirtschaftsgeographie I und Übungen
- Proseminar
- Forschungspraktikum & BA-Arbeit



Master

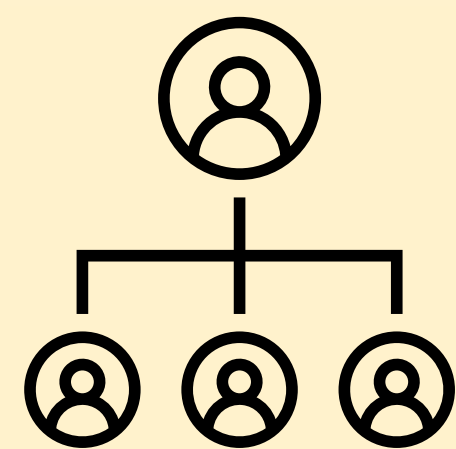
- Urban and Regional Dev. Theories
- Seminar in Economic Geography
- Studio Economic Geography
- Field Course
- Colloquium & Master Thesis

Latest from Research



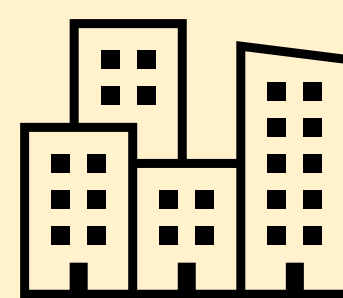
Innovation

Social Innovation
in Swiss mountain regions



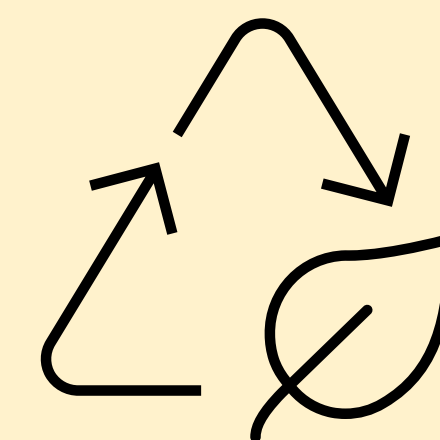
Entrepreneurship

Regional Startup
Ecosystems & Female
Entrepreneurship



Urban Economies

Socioeconomic Change of
Small and Medium-sized Cities



Sustainability

Economic Development
for a Liveable Future



Regional Policy

Development of
Mountain regions and
Rural Areas

Ongoing Projects

- Places that don't matter? Socio-economic transformation of industrial towns in Switzerland and Slovenia (financed by the Swiss National Science Foundation, 2020-2023)
- Transformative enterprises in the periphery: An analysis of wood-processing SMEs in the Canton of Bern (CH) and Vorarlberg (AT) (in cooperation with the Canton of Bern and the Wyss Academy for Nature, Miriam Hug)
- Cores in the mountain periphery: A longitudinal study of urban-rural linkages in the context of multifunctional hubs and in-migration processes in the Swiss Alps (Ellena Brandner)
- Female entrepreneurship during multiple crises: An intersectional perspective on entrepreneurial ecosystems in Switzerland and Colombia (financed by SNF SPIRIT, 2024-2027)

Team & Contact



Prof. Heike Mayer
Vice Rector Quality
& Unit Leader



Dr. Ottavia Cima
Substitute for the professorship
(Heike Mayer) & PostDoc



Dr. Arnault Morisson
PostDoc



Miriam Hug
PhD Student, Assistant



Ellena Brandner
PhD Student, Assistant



Simon Künzi
Research Assistant



Sophia Kevic
Research Assistant



Noah Suter
Research Assistant



Pascal Tschumi
Visiting Researcher

The Unit is part of the
Center for
regional Economic
Development (CRED)

University of Bern
Geographic Institute
Hallerstrasse 12
CH-3012 Bern

Tel +41 31 684 88 62



www.geography.unibe.ch/eg