

GIUB LS-SLM Feldkurs 2025

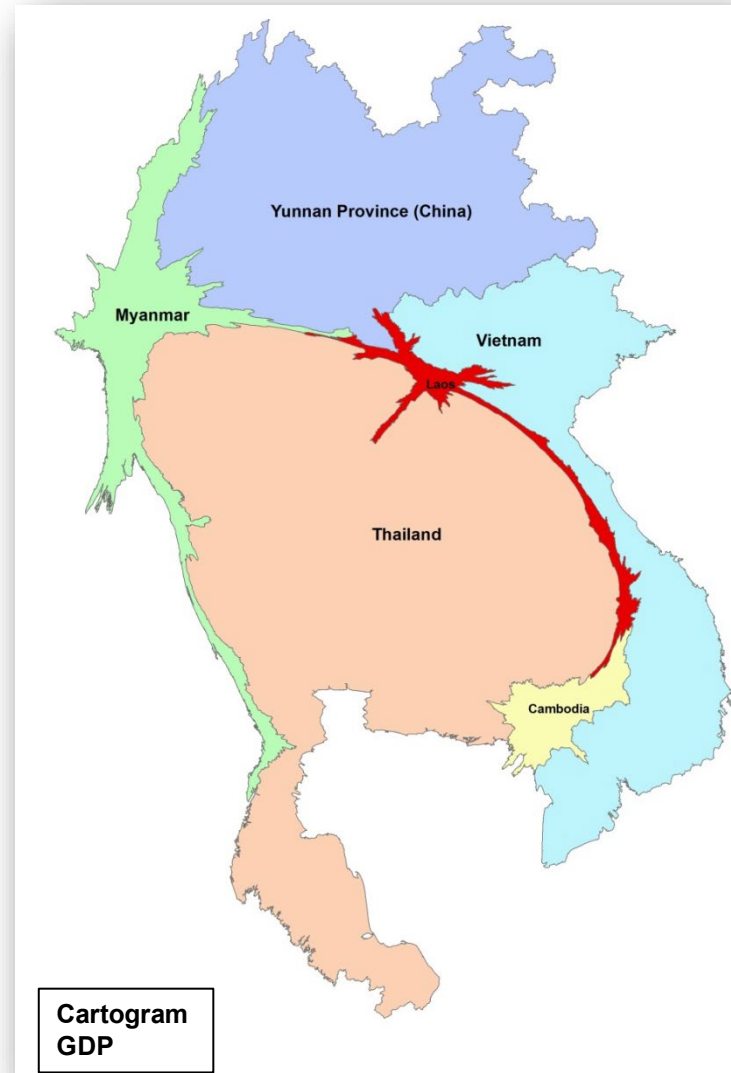
Laos



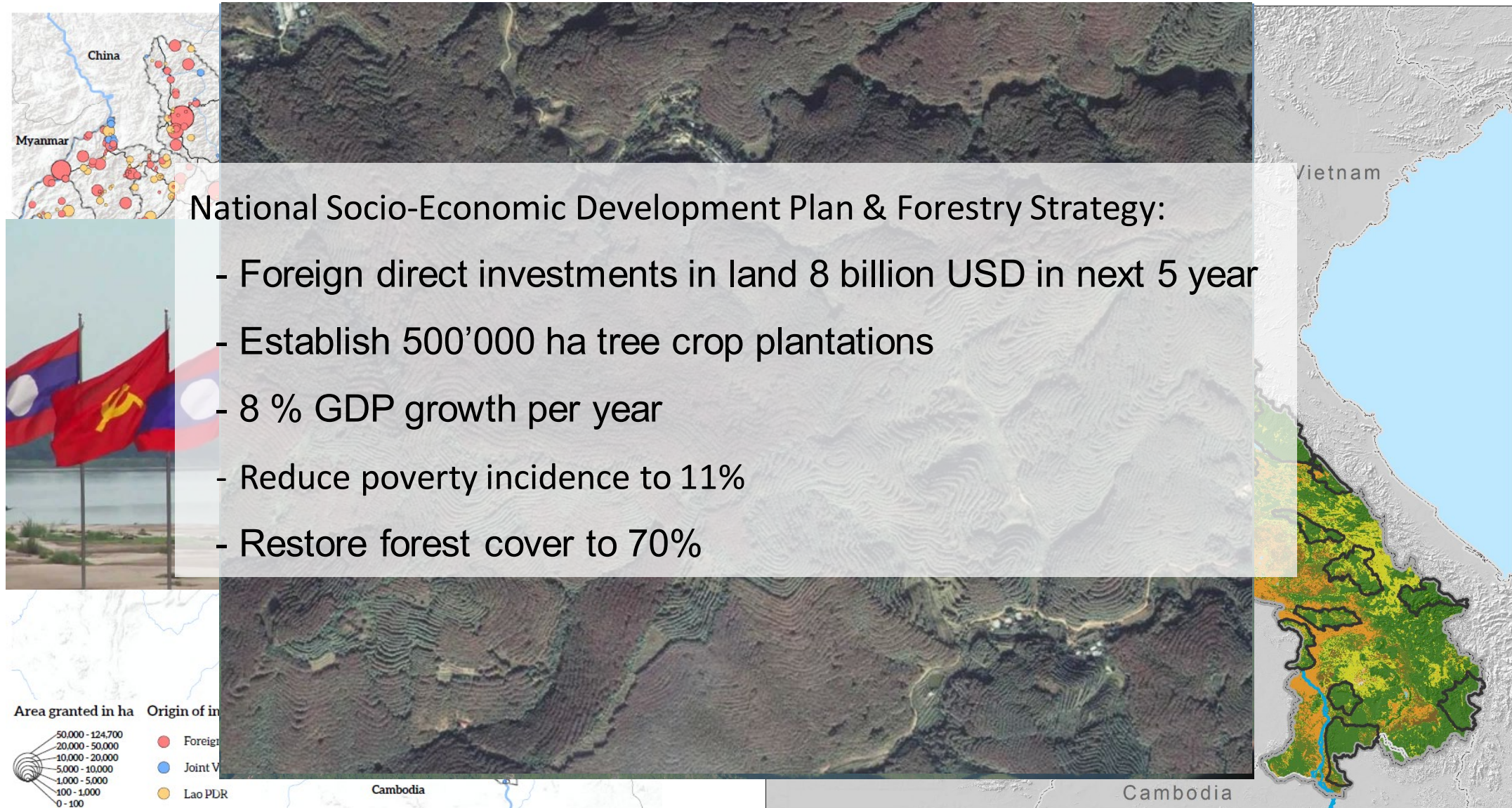
Bern: Andreas Heinimann, Peter Messerli, Julie Zähringer, Chinwe Ifejika Speranza

Laos: Michael Epprecht (CDE), Horst Weyerhäuser (WA), Pin Pravalprukskul (WA/RECOFTC), Phokham Latthachack (NUOL),

Laos: a biodiversity hotspot under pressure



Laos: a biodiversity hotspot under pressure



Topics

Multi-functional landscapes with co-benefits for nature and people

Challenges and opportunities concerning...

- Biodiversity, nature conservation and tourism
- Subsistence and commercial agriculture
- Rural development and human well-being
- Sustainable development in a globalized world (next to China..)

Generally, a focus on opportunities and levers towards nature – people co-benefits and not only a description of the challenges



General approach

- Collaboration between GIUB/SLM, Wyss Academy for Nature, Lao office of the Center for Development and Environment (CDE), and National University of Laos (NOUL)
- Between 15- 18 UNIBE students and ~8-10 students from NUOL
- Trip from Luang Prabang to Vientiane
- Exchanges with different actors



Expected effort and motivation

- **Expected effort:**
 - 1-2 preparation meetings in FS 2025
 - Before field course: Group work including preparation on specific topics
 - During field course: Active participation and investigation of specific topic including a presentation at the last day of the field course
- **Motivation:**
 - Interest to dive into complex and contested socio-economic contexts
 - Dedication to move from descriptive challenge approach to forward looking quest for solutions
 - Readiness and flexibility for trip in remoter location in Laos



Possible groups on levers of change

LEVERS	Film	
 Governance		
 Economy and Finance		
 Individual and Collective Action		
 Science and Technology		

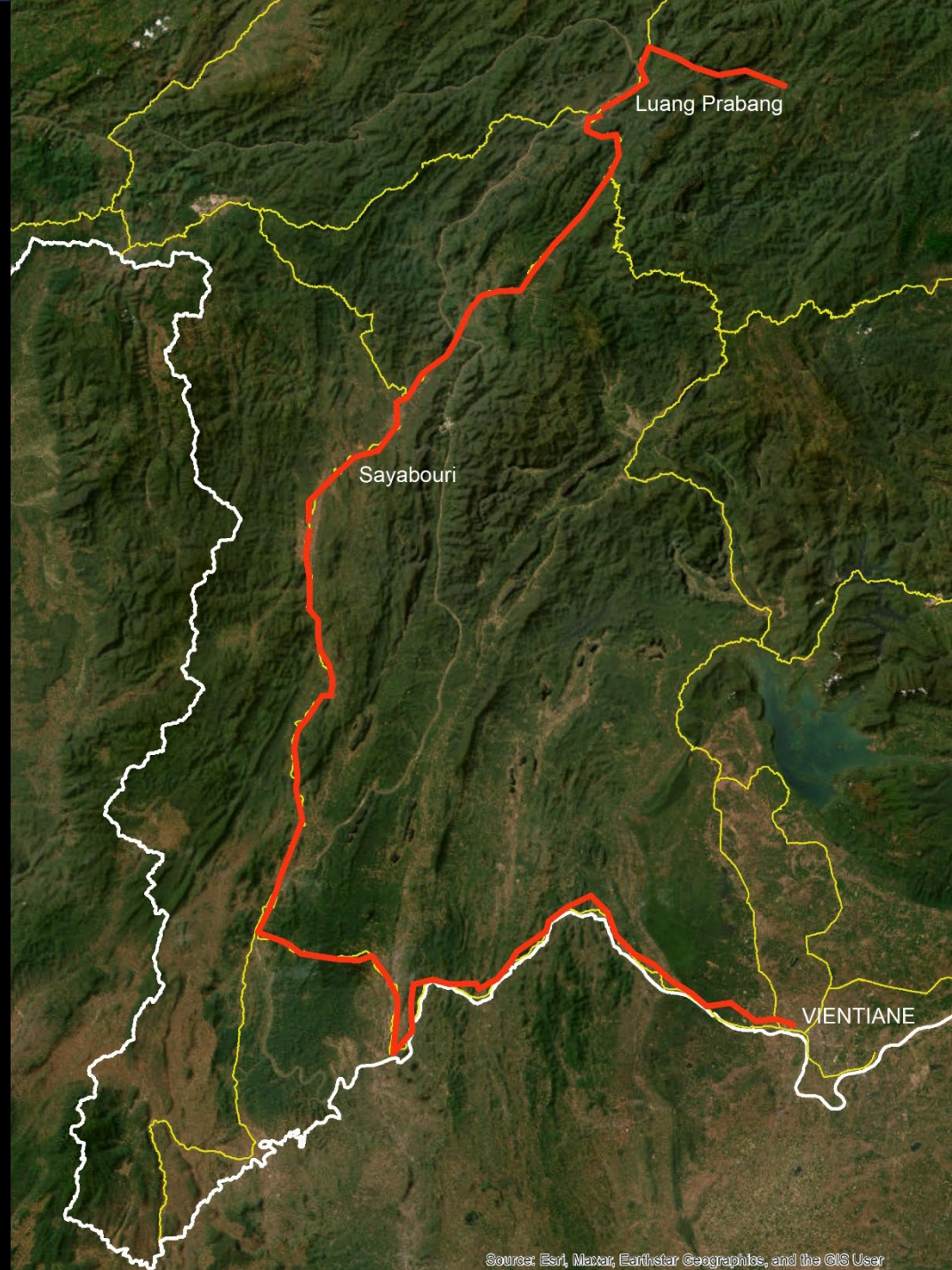
[Example product film group field course to Kenya FS2022](#)



Administrative information

- Dates:~ 11 – 20 June 2025 (latest arrival in Luang Prabang evening of 10.6.2025, earliest departure evening 20.6.25 from Vientiane)
- Languages: English
- Costs: flight to Laos ~1000 - 1200 CHF plus contribution to local costs (accommodation, full board, local transportation) of ~800 - 1000 CHF / pax
- Number of CH-Participants: 15-18
- Application:
 - Registration in KSL
 - Additional requirement: **Please send a motivation letter (1/2 page) to lorenz.zeller@wyssacademy.org and andreas.heinimann@wyssacademy.org**





World Heritage Site & mass tourism

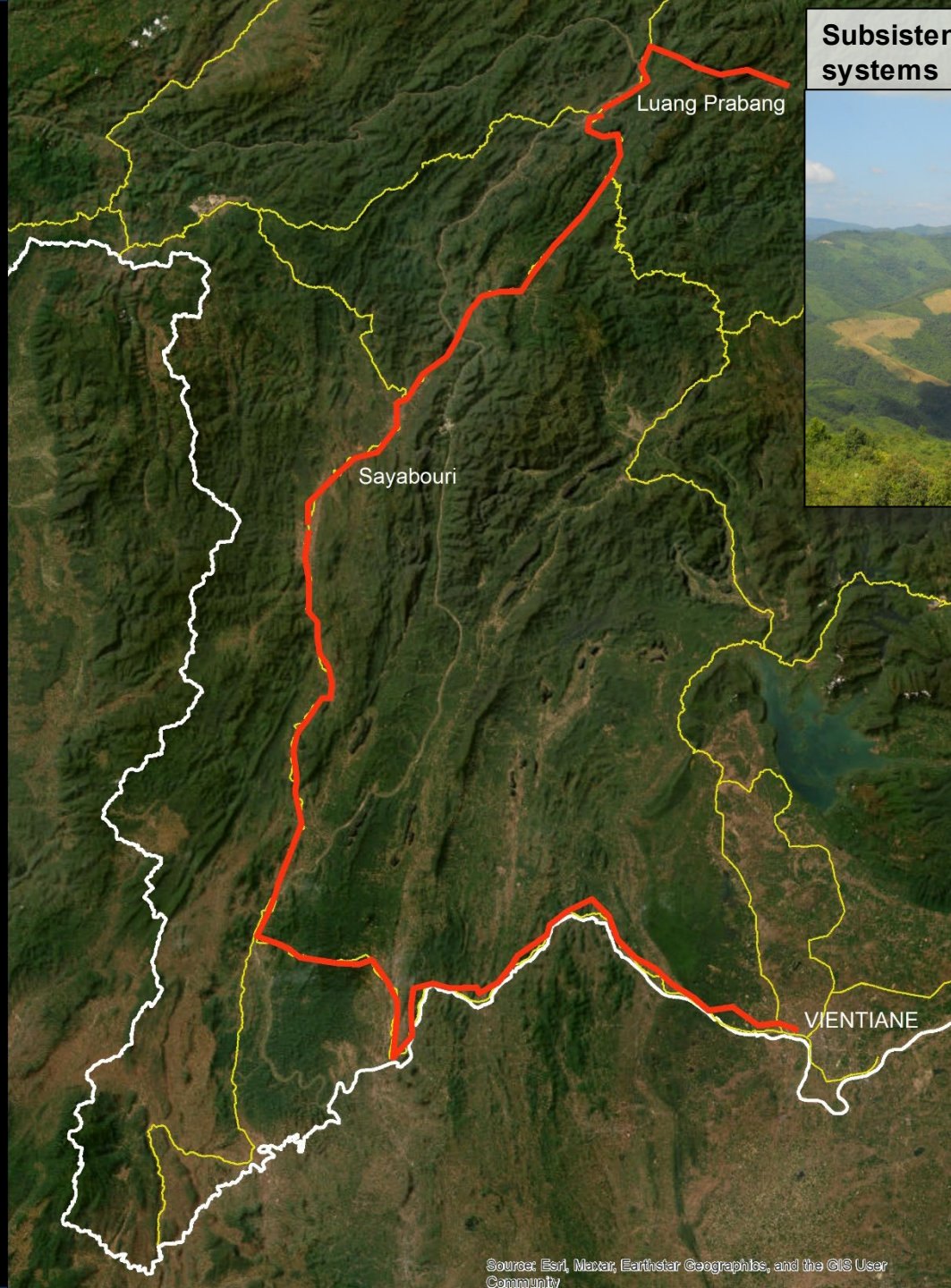


Luang Prabang

Sayabouri

VIENTIANE

Subsistence shifting cultivation systems



Luang Prabang

Sayabouri

VIENTIANE

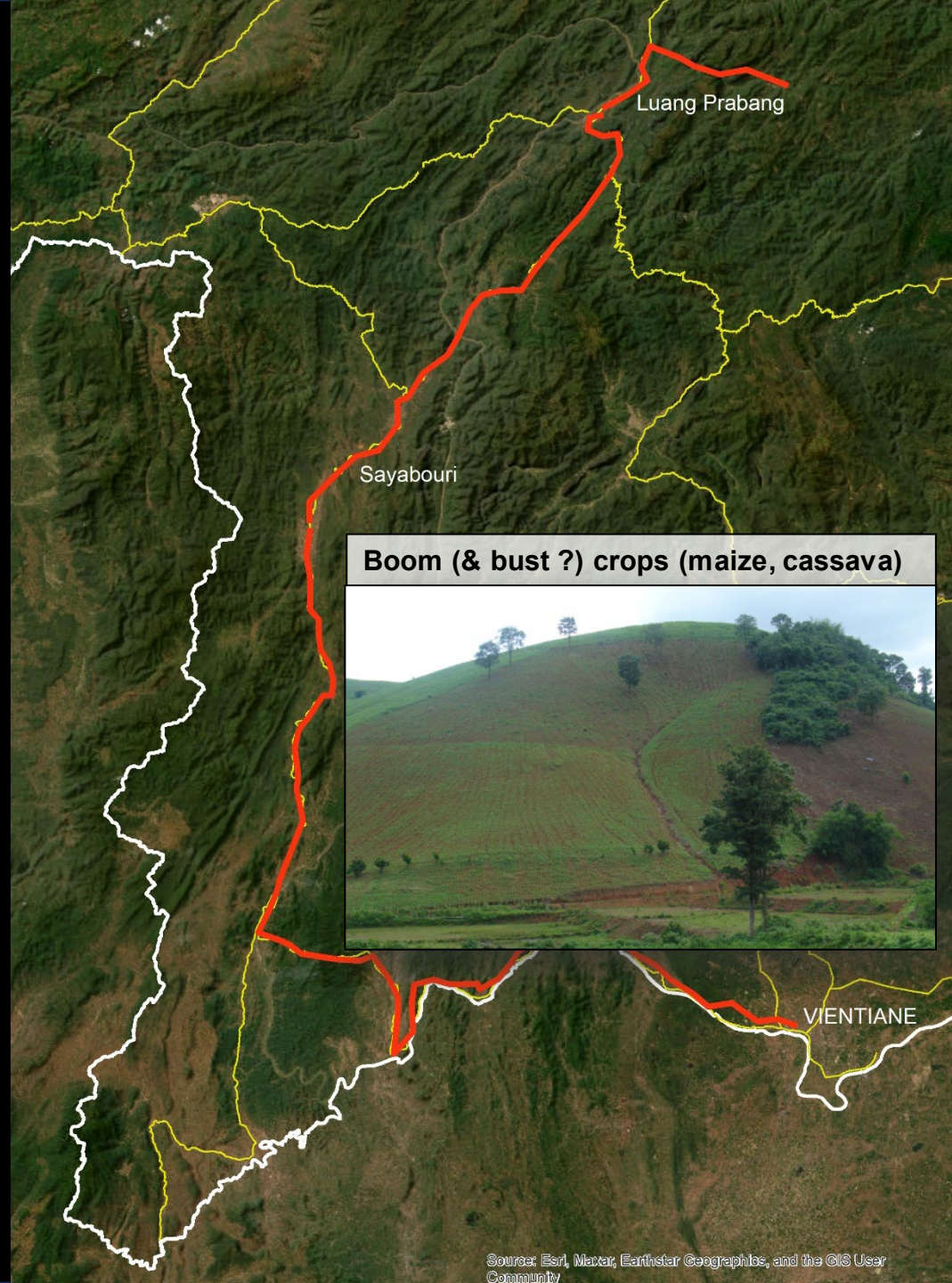




Land concessions (e.g. rubber)







Luang Prabang

Sayabouri

Boom (& bust ?) crops (maize, cassava)

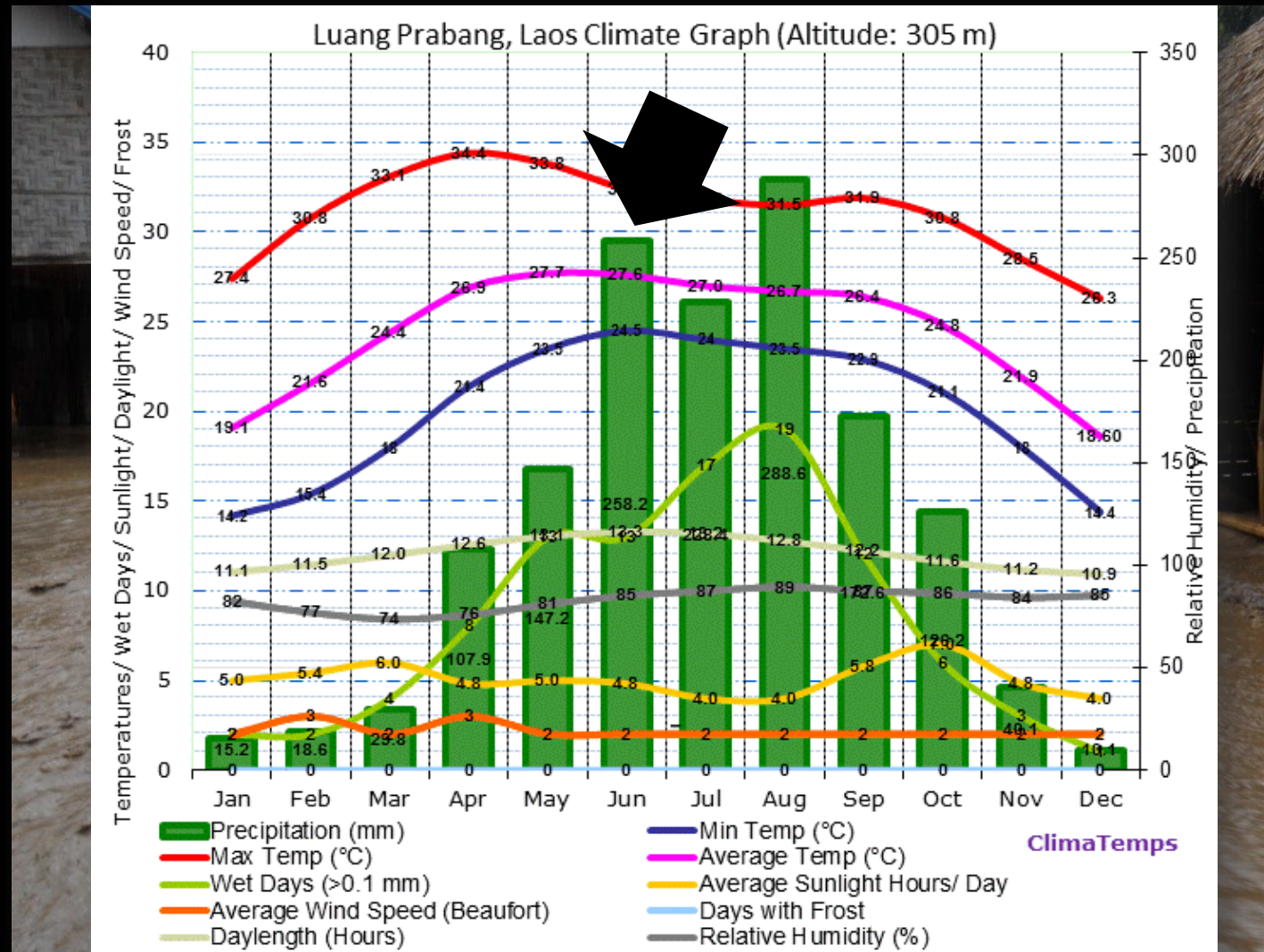


VIENTIANE

Habitat & species conservation with co-benefits for people



... it will be rainy season



Last but not least...

