

GIUB LS-SLM Feldkurs 2024

Laos

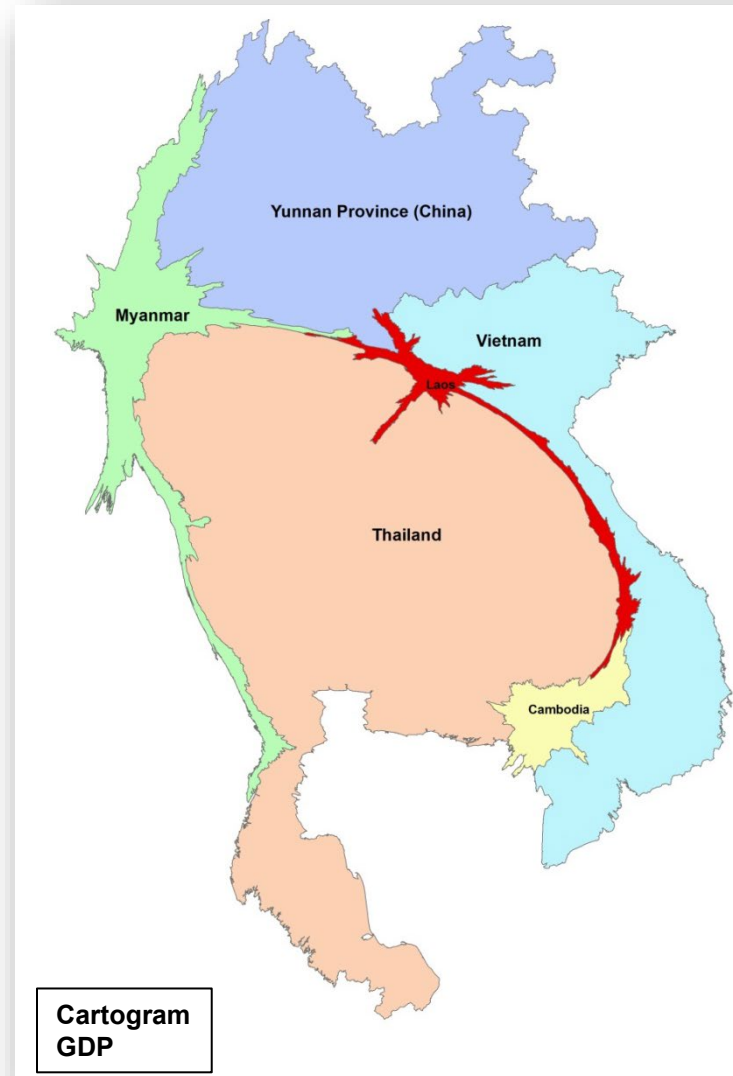


Bern: Andreas Heinimann, Peter Messerli, Julie Zähringer, Chinwe Ifejika Speranza

Laos: Michael Epprecht (CDE), Horst Weyerhäuser (WA), Pin Pravalprukskul (WA/RECOFTC), Phokham Latthachack (NUOL),

.....

Laos: a biodiversity hotspot under pressure



Laos: a biodiversity hotspot under pressure



Topics

Multi-functional landscapes with co-benefits for nature and people

Challenges and opportunities concerning...

- Biodiversity, nature conservation and tourism
- Subsistence and commercial agriculture
- Rural development and human well-being
- Sustainable development in a globalized world (next to China..)

Generally, a focus on opportunities and levers towards nature – people co-benefits and not only a description of the challenges



General approach

- Collaboration between GIUB/SLM, Wyss Academy for Nature, Lao office of the Center for Development and Environment (CDE), and National University of Laos (NOUL)
- Up to 16 UNIBE students and ~10 students from NUOL
- Trip from Luang Prabang to Vientiane
- Exchanges with different actors



Expected effort and motivation

- **Expected effort:**
 - 2-3 preparation meetings in FS 2024
 - Before field course: Group work including preparation on specific topics
 - During field course: Active participation and investigation of specific topic including a presentation at the last day of the field course
- **Motivation:**
 - Interest to dive into complex and contested socio-economic contexts
 - Dedication to move from descriptive challenge approach to forward looking quest for solutions
 - Readiness and flexibility for trip in remoter location in Laos



Possible groups on levers of change

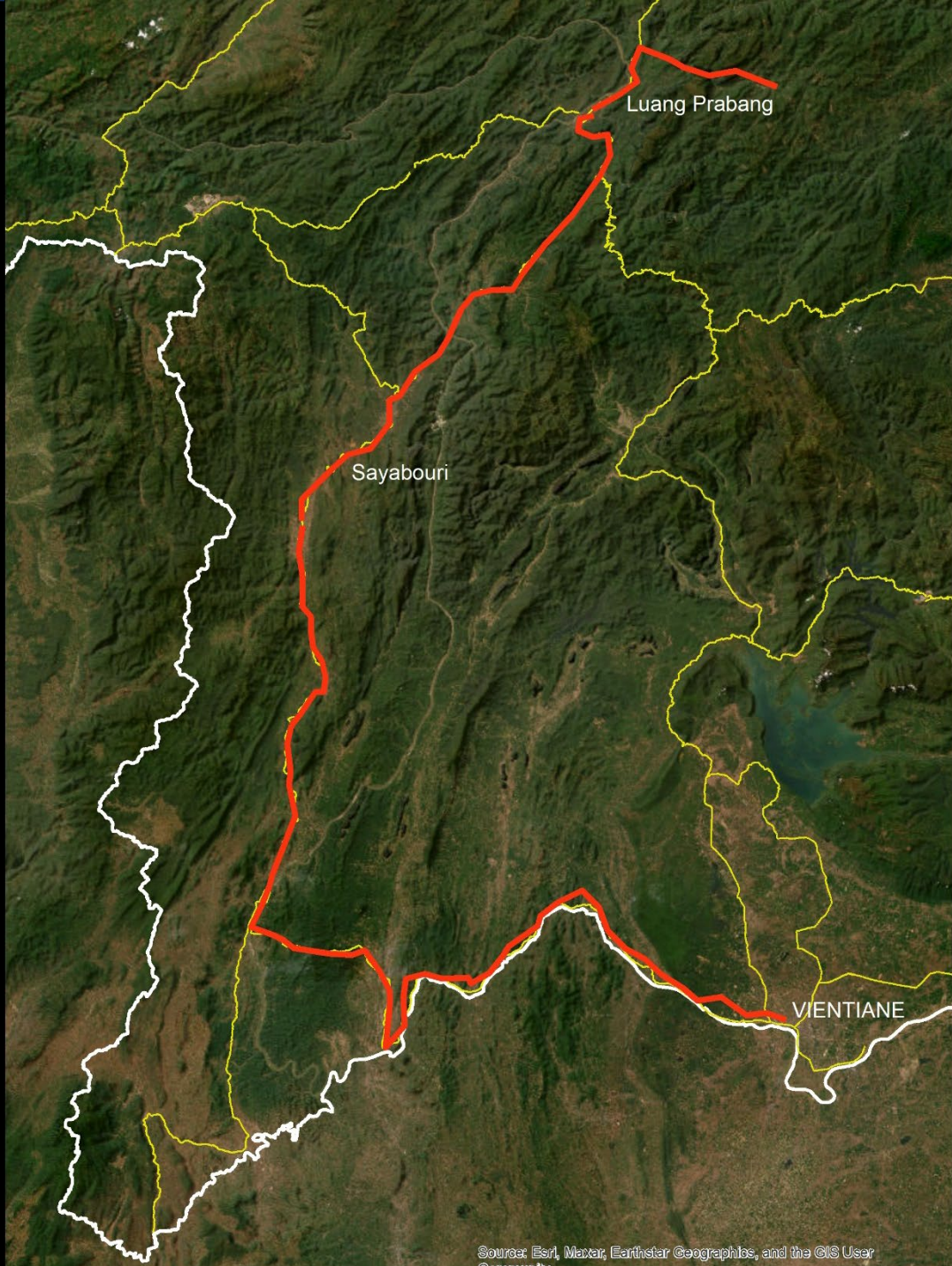
LEVERS	Film	
 Governance		
 Economy and Finance		
 Individual and Collective Action		
 Science and Technology		



Administrative information

- Date: 12 – 21 June 2024 (Arrival in Luang Prabang evening of 11.6.2024)
- Languages: English
- Costs: flight to Laos ~900 - 1200 CHF plus contribution to local costs (accommodation, full board, local transportation) of ~800 - 1000 CHF / pax
- Number of CH-Participants: 16
- Application:
 - Registration in KSL
 - Additional requirement: **Please send a motivation letter (1/2 to max. 1 page) to lorenz.zeller@wyssacademy.org and andreas.heinimann@wyssacademy.org**





Luang Prabang

Sayabouri

VIENTIANE

World Heritage Site & mass tourism

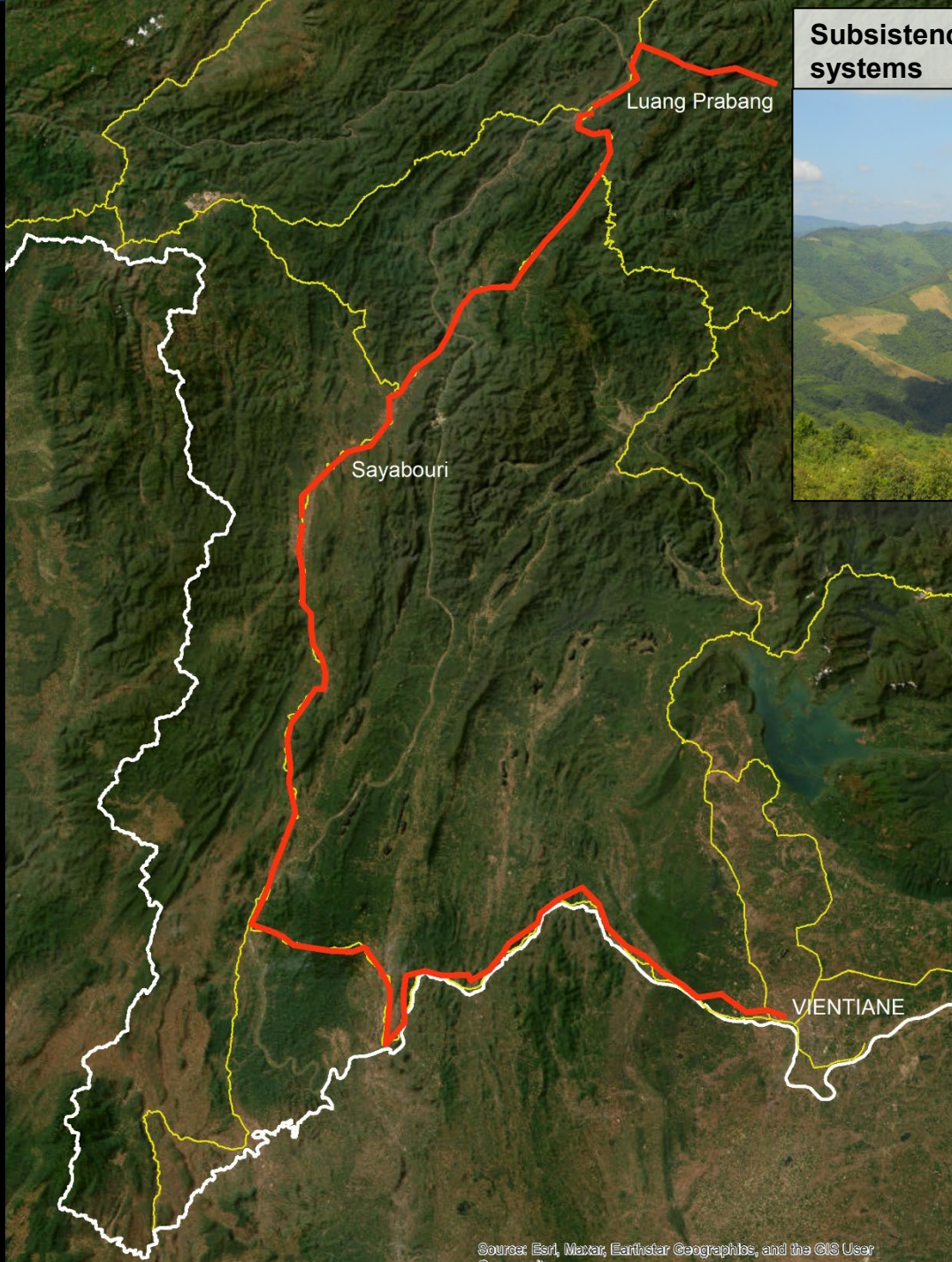
Luang Prabang

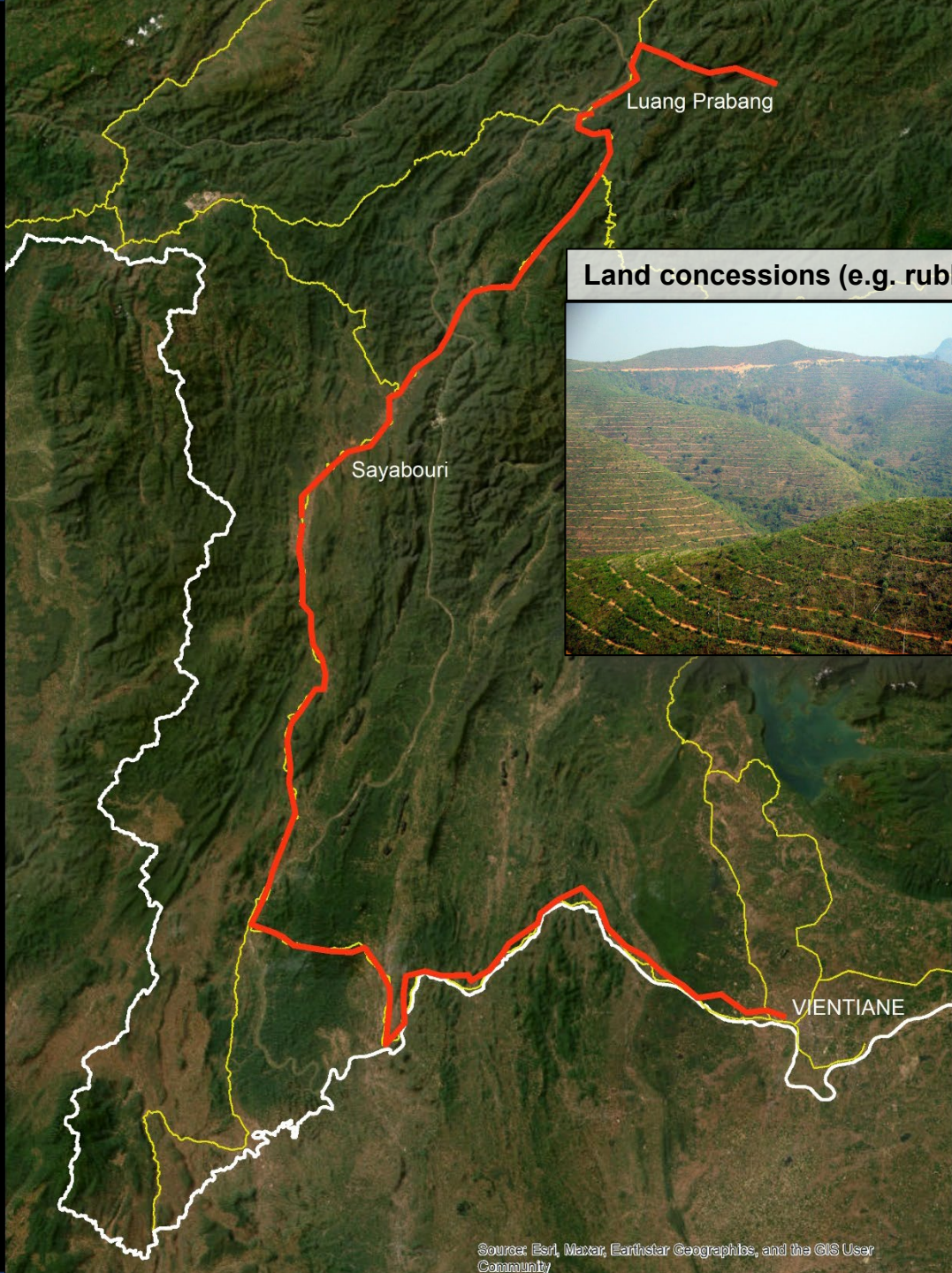


Sayabouri

VIENTIANE

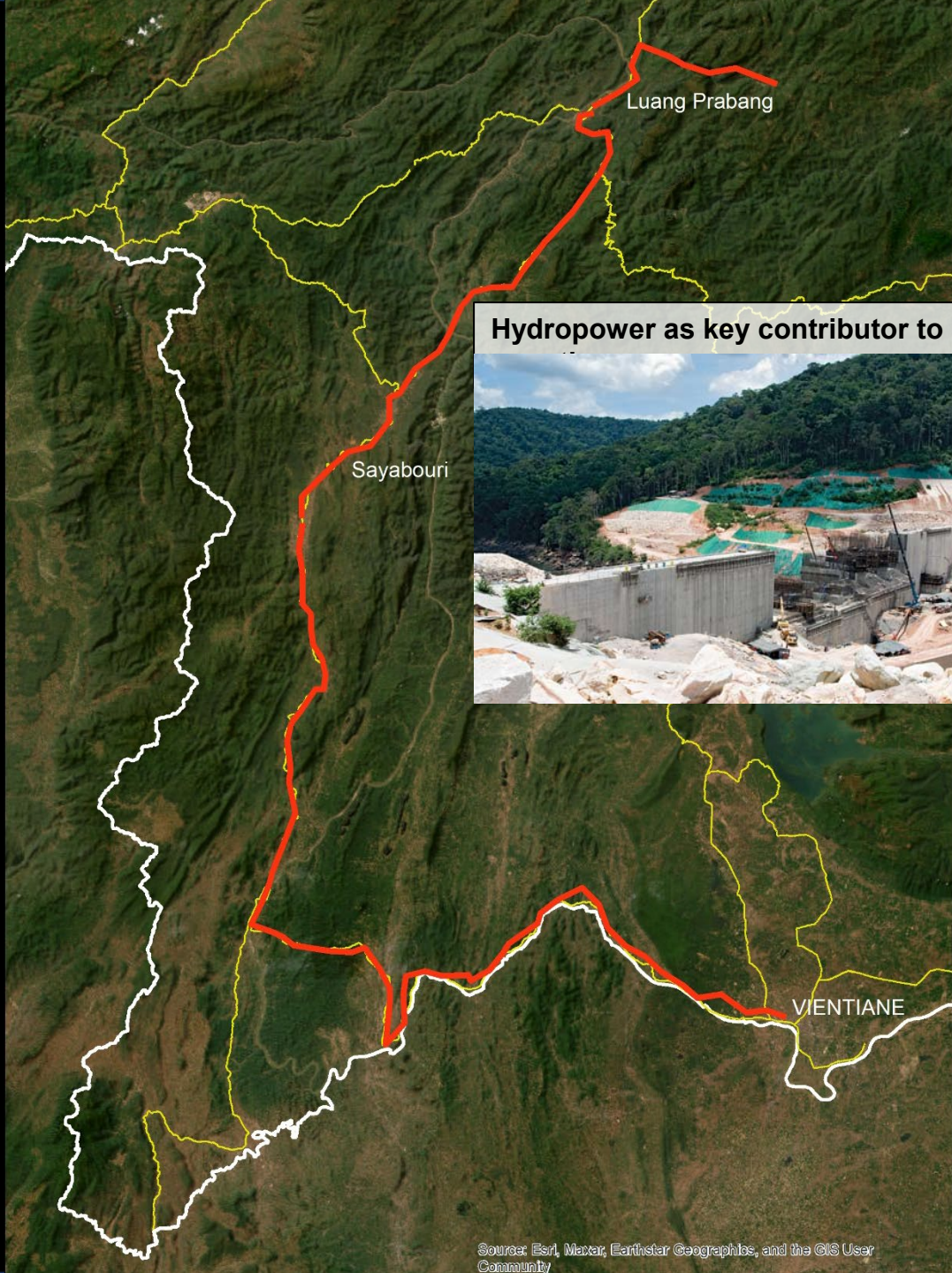
Subsistence shifting cultivation systems





Land concessions (e.g. rubber)





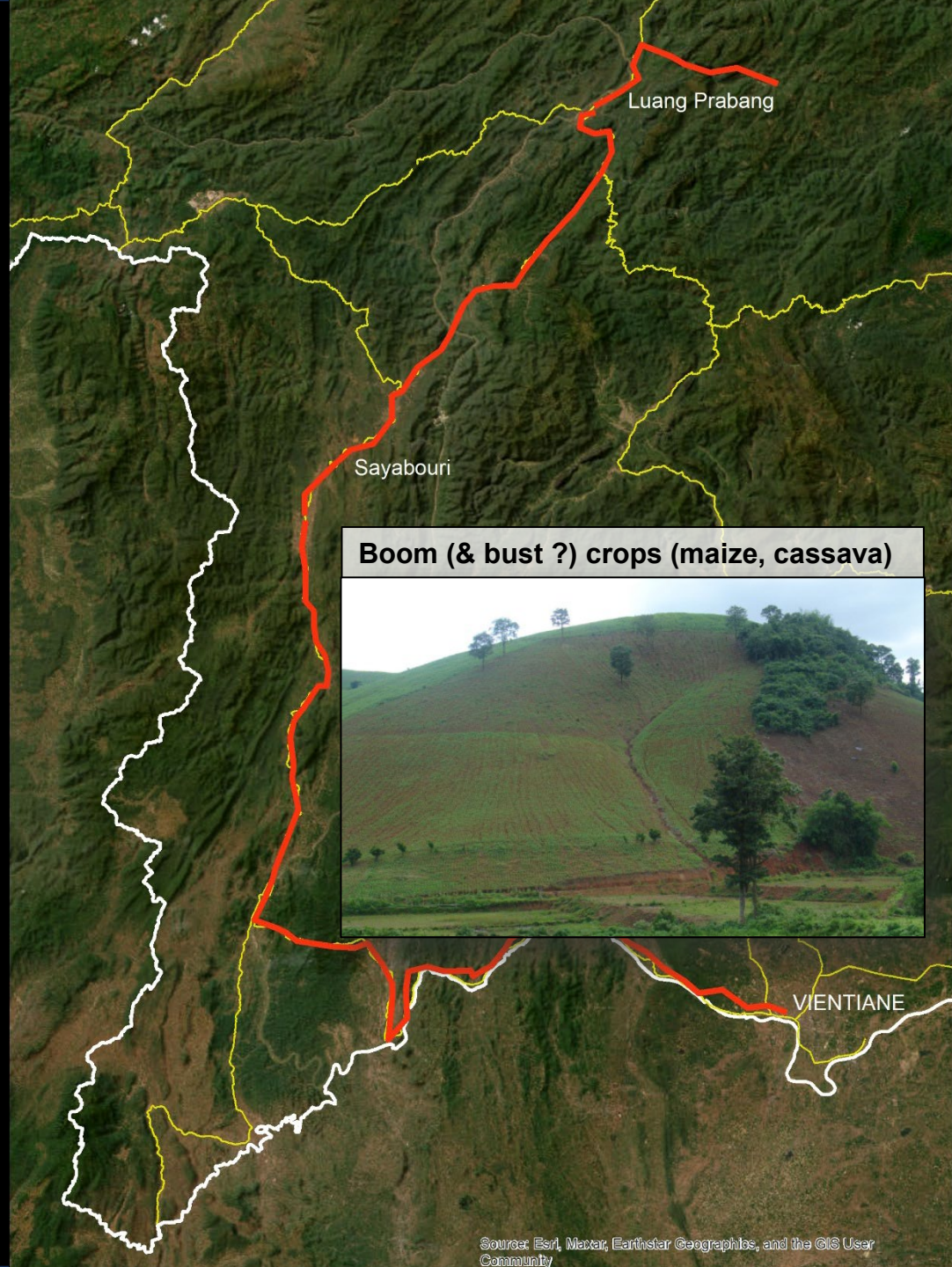
Luang Prabang

Sayabouri

VIENTIANE



Hydropower as key contributor to GDP



Luang Prabang

Sayabouri

Boom (& bust ?) crops (maize, cassava)

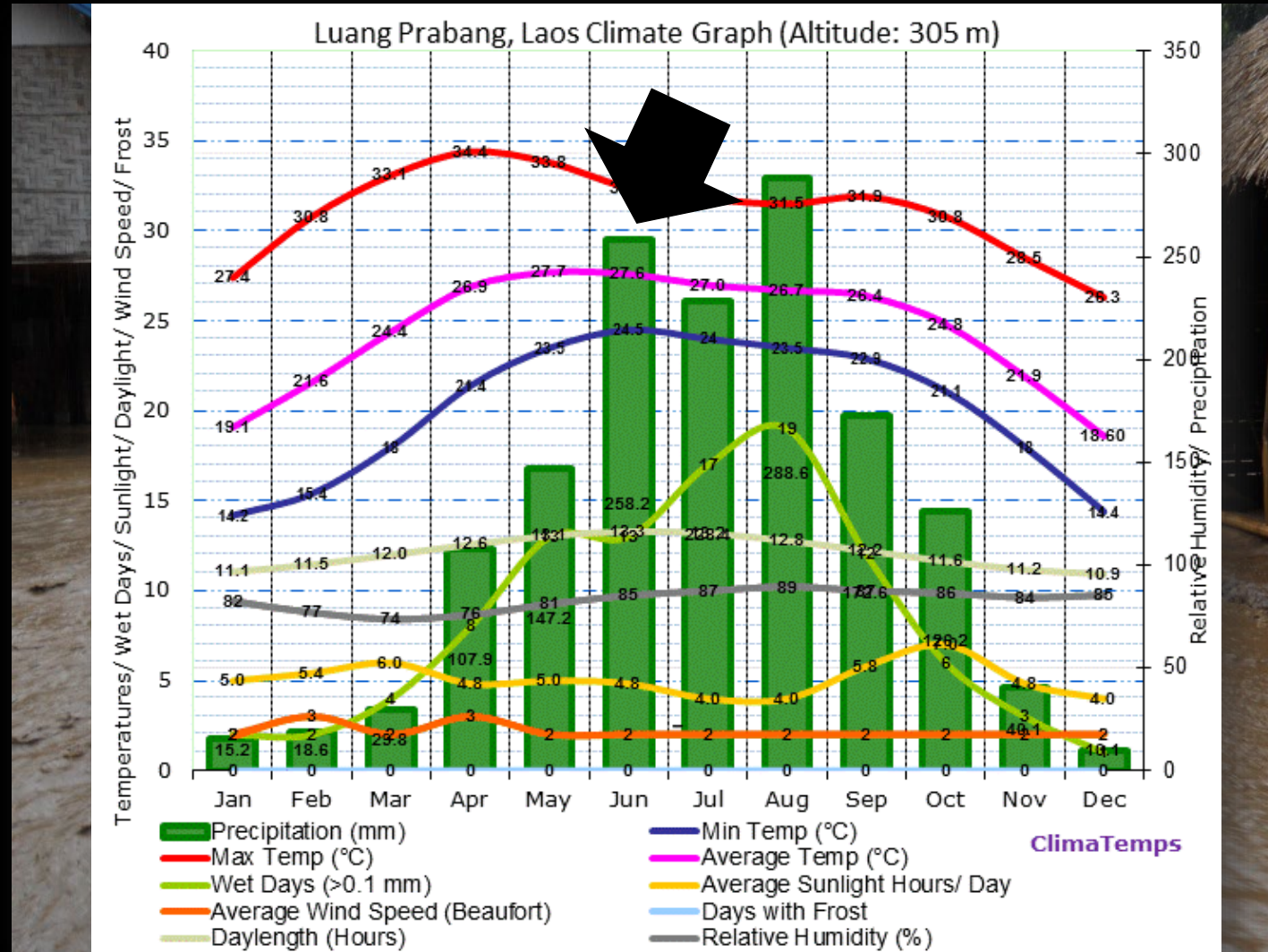


VIENTIANE

Habitat & species conservation with co-benefits for people



... it will be rainy season



Last but not least...

